



# ID 301

Climatic Test Cabinet



N-wise



*ID 301 Climatic Test Cabinet is designed to simulate natural climatic conditions. By means of the wide range of temperature and humidity control of ID 301, various kinds of products can be tested at different climatic conditions and stability, artificial aging and storage tests can be easily done as well. The reliability, performance, operability and safety makes ID 301 one of the indispensable equipment for quality control and R&D in:*

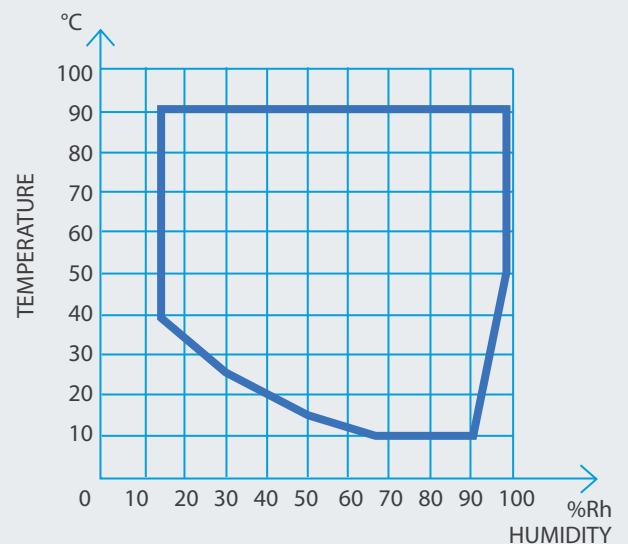
- Electronic Industry
- Telecommunication Industry
- Aircraft and Aviation Industry
- Plastic Industry
- Pharmaceutical Industry
- Food Industry
- Automobile Industry
- Automobile Supply Industry
- Chemical Industry
- Textile Industry
- Construction Materials Industry
- Packaging Industry
- Military Equipment and Armament Industry
- Genetic manipulations of plants

## DURABLE AND RELIABLE DESIGN

- Stainless steel chamber resisting sudden temperature changes
- Outer body including the door made of epoxy-polyester coated stainless steel to resist high humidity levels
- Triple insulation consisting of high density injected polyurethane, glass wool and aluminium layer
- Double door seals with heated surface
- Door window consists of quintuple glass for perfect insulation
- Heated window against condensation
- Interior lighting for easy follow up of the samples
- Ø80 mm. access port as standard

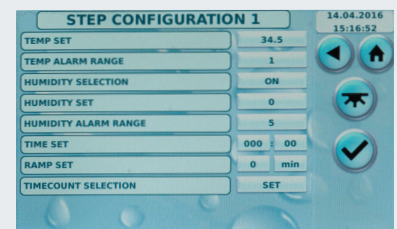
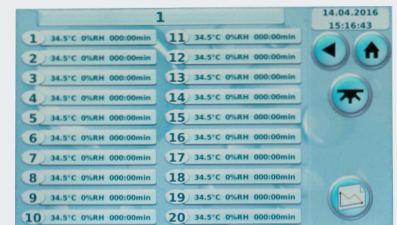
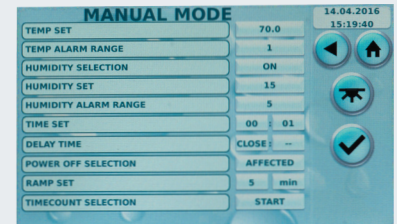
## CLIMATIC CONTROL SIMILAR TO NATURE

- Humidity produced by the reliable humidity generator
- Accurate humidity measurement even at high temperatures by sensitive humidity sensor
- PID controlled heating and proportional controlled cooling and humidification
- Powerful air circulation system maintaining temperature and humidity uniformity and stability even at low temperatures



## OPTIMIZED CLIMATIC CONDITIONS WITH POWERFUL N-Wise™ CONTROL SYSTEM

- N-Wise™ control system for continuous optimization of climatic conditions
- Full information with 7" colourful touch screen mounted on the door
- Twenty program memories for frequently operated applications
- Programmable 20 steps for each program
- Program repetition up to 99 times
- Programmable ramp function for heating and cooling as °C/minute or time period
- Programmable altitude to calculate the dew point temperature according to psychometric formula
- Comprehensive self-diagnostic system to provide information regarding any malfunction
- Massive data storage with 2 GB internal memory
- N-Wise Closer™ software for programming and controlling ID 301
- Adjustable electronic safety thermostat
- Printer connection for printing operated programs in the memory and the current operating program
- RS 232 port for PC connection, Ethernet port for internet connection and USB ports for memory stick
- External temperature probe connections for four pieces of PT 100 temperature probes that ensure measured temperatures to be displayed on the screen



## MONITORING, TRACEABILITY & COMMUNICATION

- Operating parameters can be tracked graphically against time
- Data tracking and storage on PC via N-Wise Closer™ software
- USB port to record the data in the memory to a memory with selectable time intervals between 1 and 60 minutes
- Ethernet port for remote access through internet by means of optional N-Wise Closer™ software
- Sending e-mails up to five e-mail addresses with the details of failure
- N-Wise Closer™ allows to access operating parameters, memory, failure history and other technical parameters
- Audible alarms and on-screen messages in plain language, no codes
- For ultimate security, optional AlerText™ sends a text message to mobile phones

## TECHNICAL SPECIFICATIONS

Chamber Volume	290 litres
Temperature Range without Humidity	- 40°C / +150°C
Temperature Range with Humidity	+10°C / +90°C
Humidity Range	15% / 98% RH
Control System	N-Wise™ Control System
Display	7" Colourful Touch Screen
Temperature Set and Reading Sensitivity	0,1°C
Humidity Set and Reading Sensitivity	1% RH
Timer	1 minute-20.000 hours and hold position
No of Program Memory	20 +1 Program without Step Control
No of Steps	20
No of Program Repetition	1-99
Altitude Setting	0 – 2000 meters
Memory Capacity	2 GB
No of Shelves standard/max.	2 /16
Internal Material	Stainless Steel
External Material	Epoxy-Polyester Powder Coated Stainless Steel
Power Consumption	7.500 W
Power Supply	400 V, 50 Hz.,3 phases
Internal Dimensions (WxDxH)	605x625x785 mm
External Dimensions (WxDxH)	950x1533x1670 mm
Packing Dimensions (WxDxH)	1090x1660x2070 mm
Net/Packed Weight	420 / 540 kg

### FACTORY FITTED OPTIONS

ID 301A Automatic water supply unit

### OPTIONS

I 01 0677 Portable PT 100 temperature sensor

### ACCESORIES

R 01 128Shelf

R 01 112Shelf support ( should be ordered four pieces)

P 03 566Shelf carrier ( should be ordered four pieces)



**NÜVE SANAYİ MALZEMELERİ İMALAT VE TİCARET A.Ş.**

Saracalar Mah. Saracalar Kümeevleri No: 4/2 Akyurt 06750 ANKARA t. 0312 399 28 30 f. 0312 399 21 97

[nuve.com.tr](http://nuve.com.tr) [sales@nuve.com.tr](mailto:sales@nuve.com.tr)

ISO 9001: 2008  
ISO 13485: 2003